

# District of Lillooet Water Usage June & July 2021



- High water demand creates major stresses on our water system and water management is critically important to help fight fires.
- When pumps and other components of the system are running for longer periods, it creates high heat and a greater likelihood of breakdown/failures. This downtime equates to an inability to keep up with demand, and an increase of risk for fire suppression. This coupled with periods of high turbidity in the Seton River creates a situation where water management is critical.
- The strain on operations staff limits their ability to address other maintenance needs, again increasing risk.
- We must maintain a minimum of 70% water in our reservoirs. As seen in June and July of 2021, water usage was well above the 2020 average, even with the Stage 2 restriction in place. Numerous times this summer we have dipped very close to this minimum level. If conservation efforts are not successful or pumps fail from overuse, firefighters may not have enough water to adequately suppress a fire within town limits, regardless of the availability of water sources that feed into the system.

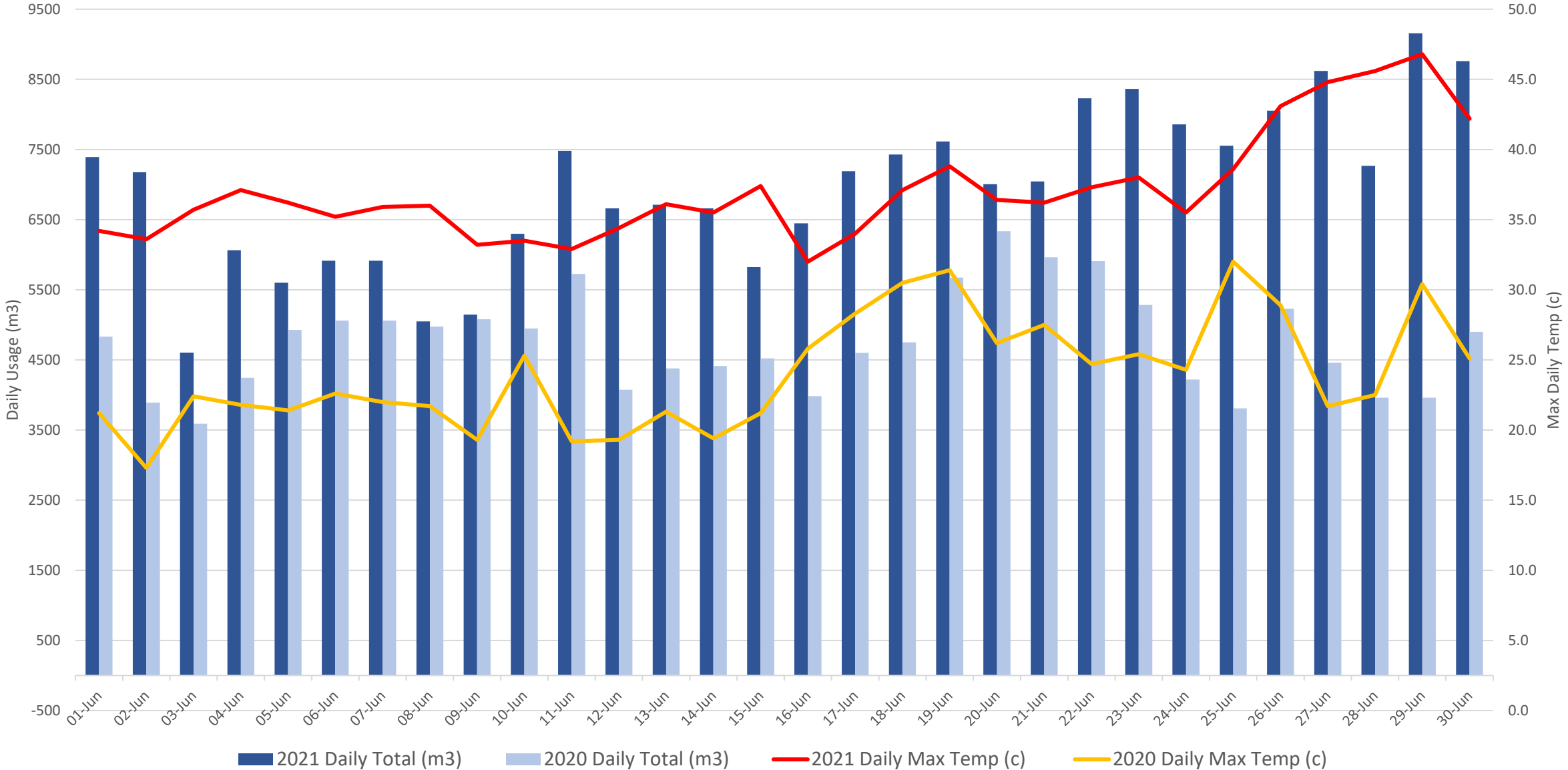
*Continued...*

- This summer we have experienced extreme and record-breaking temperatures and we must continue to respond accordingly.
- The District continues to urge community members to follow watering restrictions and conserve wherever possible.
- Thank you to those continuing to do their part for the safety of our community as we all work together to get through this record-breaking season.



# District of Lillooet Water Usage Comparison - June 2020 & 2021

Please Note:  
\*Stage 2 Water Restrictions implemented June 30/2021  
\*Irrigation shut off at 3 District Parks June 25/2021



# District of Lillooet Water Usage Comparison - July 2020 & 2021

