

Human-Wildlife Conflict

is increasing in the District of Lillooet.

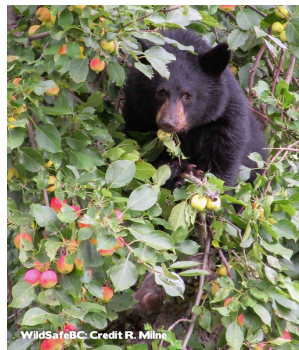
Do Your Part! Be BearSmart!

Unsecured garbage and ripening fruit are buffets for wild animals. This is partly why we are seeing increased human-wildlife conflict in the District of Lillooet, and in BC. Every year, Conservation Officers respond to thousands of complaints regarding bears. Most of these conflicts begin when people allow bears to access non-natural food sources. **EVERYONE is responsible to do their part to reduce human-wildlife conflicts.** We don't want our town to be an attractant providing non-natural food sources for bears.

LILLOOET
GUARANTEED RUGGED



"A fed bear is a dead bear!"



Did you know the District's *Garbage Collection and Regulation Bylaw, 2007, No. 296* **REQUIRES** residents to use "wildlife resistant" waste containers?

A **Garbage Receptacle** means a **Wildlife Resistant** Waste Container...A garbage receptacle shall measure 76cm (30") in height by 50cm (20") in diameter and hold a maximum of 2 standard sized household garbage bags. Garbage receptacles...**must be secured with a lid** and when full have a maximum weight of not more than 20kg or 44lbs.

Containers must latch, lock, or snap closed. Unsecured garbage bags are unacceptable as well as loose lids or covers.



UNACCEPTABLE

- Loose bag or no lid
- Unsecured
- No latch or lock/snap closure method



ACCEPTABLE

- Secured with lid and a latch or other lock/snap closure method
- No loose bags

Important Info from the *Garbage Collection and Regulation Bylaw, 2007, No. 296:*

***Applicable to ALL residential garbage collection within the entire District.**

<p>Aside from collection day, all garbage, food waste, and recycling that could attract wildlife shall be stored indoors or in a <i>Wildlife Resistant Enclosure</i> and shall not be left in any area accessible to wildlife, including on any patio, balcony or deck.</p>	<p>Garbage Receptacles shall be placed on the road right of way for pick-up after 6:00am and before 8:00am on collection day.</p>
<p>All Garbage Receptacles shall be kept in good condition and shall be replaced when damaged.</p>	<div data-bbox="850 464 1040 674" data-label="Image"> </div> <p>All garbage for collection must be placed in an enclosed Garbage Receptacle and secured within a large garbage bag.</p>
<p>For residential service, the maximum number of receptacles is two (2) per dwelling unit.</p> <div data-bbox="565 926 662 982" data-label="Image"> </div>	<p>Only household waste is collected. We do not pickup yard/garden waste, batteries, construction waste, furniture, electronics, tires, chemicals, or oversized materials. All recyclable materials should be taken to the Lillooet Landfill & Recycling Centre.</p>

If you receive a written warning, and do not comply within the timeframe provided, penalties may be applied.

According to Schedule 8 of the *Bylaw Notice Enforcement Bylaw, No. 2021-002:*

- Improper storage of garbage: \$50
- Providing attractants to wildlife: \$200
- Garbage not enclosed: \$25
- Place garbage out before 6am: \$50
- Broken receptacle: \$25
- Failure to take remedial action: \$100

Fruit Tree Tips



Domestic fruit is not a natural food source for bears and is the #2 attractant that brings bears into our community.

- Prune fruit trees mid-winter for a manageable harvest.
- Harvest fruit regularly and do not allow fruit to accumulate on the ground as this will attract wildlife.
- Consider replacing your fruit tree with a native non-fruit bearing species if you don't use the fruit.

Let's aim to be a Bear Smart Community!

This program is based on a series of criteria that communities must achieve in order to be recognized as being "Bear Smart". The responsibility to manage bear-human conflicts rests with everyone; Bear Smart requires participation from the provincial government, local governments, and citizens to be successful.



For more info on Living with Wildlife check out: www.wildsafebc.com

www.slrd.bc.ca/services/public-safety-health/living-wildlife